



Lincoln Charter School

Dave Machado, Principal
 7834 Galway Lane
 Denver, NC 28037
 (704) 483-6611

Grades 0K-12
 Regular School
 Traditional Calendar

SAFE, ORDERLY AND CARING SCHOOLS

School Safety

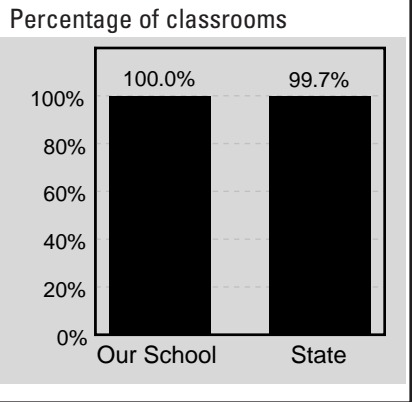
The number of acts of crime or violence reported below includes all acts occurring in school, at a bus stop, on a school bus, on school grounds, or during off-campus, school-sponsored activities.

Out of 1,151 students in our school, there were a total of 0 act[s] of crime or violence.

The number of acts of crime or violence reported per 100 students:

OUR SCHOOL	0
STATE	1

Access to Technology



SCHOOL PROFILE

School Size
 The total number of students in our school and the average number of students in schools with similar grade ranges in the state.

OUR SCHOOL	1,151
STATE	412

Average Class Size
 The average number of students enrolled in a "typical" K-8 classroom.

	Kindergarten	Grade 1	Grade 2	Grade 3	Grade 4	Grade 5	Grade 6	Grade 7	Grade 8
Our School	19	22	23	23	23	21	23	18	23
State	19	20	19	20	21	21	22	21	21

* Due to data entry issues, some class sizes in select schools are unavailable for 2009-10.

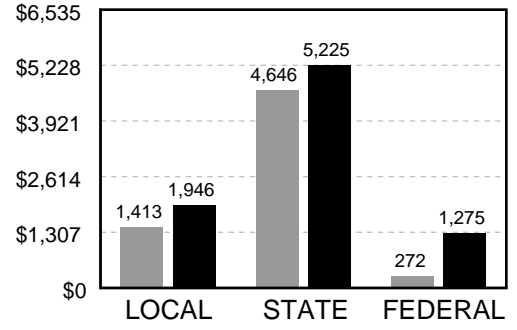
Average Course Size
 The average number of students enrolled in the the courses listed at the time of testing.

	English I	Algebra I	Algebra II	Geometry	Biology	Chemistry	Physical Science	Physics	Civics & Econ.	US History
Our School	22	20	16	16	19	---	12	---	19	12
State	18	20	20	20	18	---	18	---	18	18

* Chemistry and Physics tests were eliminated from the ABCs effective 2009-10.

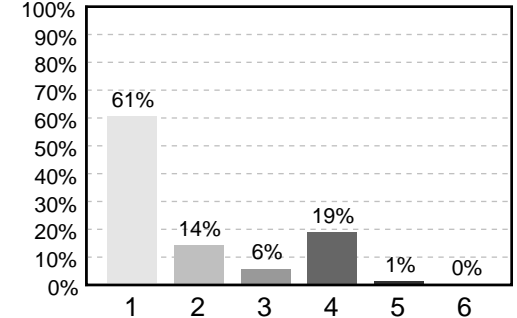
FINANCIAL SUPPORT

Source of Funds (Amount per Student)
 Charter schools in North Carolina operate with funding from local, state, and federal sources. The financial support reflected in these numbers includes all expenses concerned with operating a charter school, including teacher and administrator salaries, textbooks, and other educational supplies and materials.



Use of Funds
 Education is a labor-intensive enterprise, as reflected in the accompanying chart. Salaries for teachers and other staff are usually the largest expense in a charter school. State and federal funds are generally allotted for specific purposes, services, or programs.

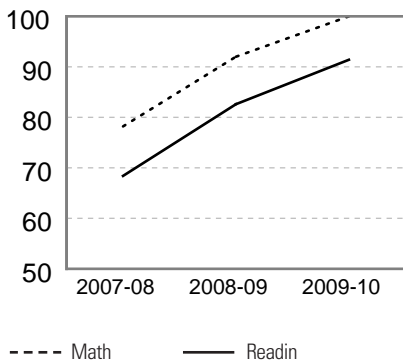
- 1. Salaries
- 2. Benefits
- 3. Supplies & Materials
- 4. Purchased Services
- 5. Equipment
- 6. Other



HIGH STUDENT PERFORMANCE

Three-Year Trend of Student Performance on the ABCs End-of-Grade Reading and Math Tests

Percentage of students at or above grade level for the past three years.



School Attendance

The average percentage of students who attend school daily.

Our School	96%
State	95%

To learn more about federal No Child Left Behind (NCLB) requirements, visit <http://www.ncpublicschools.org/nclb/>

For information about the ABCs of Public Education and Adequately Yearly Progress (AYP), visit <http://www.ncpublicschools.org/accountability/>

Performance of Students in Each Grade on the ABCs End-of-Grade Tests

Percentage of Students' Scores At or Above Grade Level

	Grade 3		Grade 4		Grade 5		Grade 6		Grade 7		Grade 8		OVERALL	
	Reading	Math	Reading	Math	Reading	Math	Reading	Math	Reading	Math	Reading	Math	Reading	Math
Our School	89.5%	>95%	92.6%	92.6%	92.9%	>95%	>95%	>95%	89.0%	94.0%	86.3%	>95%	91.4%	>95%
State	66.4%	81.9%	71.6%	83.0%	71.1%	81.2%	75.3%	80.5%	66.8%	80.2%	69.5%	83.9%	70.1%	81.8%

N/A = Fewer than five students

Performance of Students in Each Course on the ABCs End-of-Course Tests

Percentage of Students' Scores At or Above Grade Level

	English I	Algebra I	Algebra II	Geometry	Biology	Chemistry	Physical Science	Physics	Civics & Econ.	US History
Our School	>95%	91.8%	73.8%	87.5%	---	N/A	70.8%	---	94.9%	>95%
State	82.4%	77.8%	84.9%	82.3%	---	N/A	76.4%	---	78.7%	81.6%

N/A = Fewer than five students

* Chemistry and Physics tests were eliminated from the ABCs effective 2009-10.

Performance of Each Student Group on the ABCs End-of-Grade Tests

Percentage of Students, Grouped by Gender, Ethnicity, and Other Factors, Who Passed BOTH the Reading and Math Tests

	Male	Female	White	Black	Hispanic	Amer. Indian	Asian Pacific Islander	Multi-Racial	E.D.	N.E.D.	L.E.P.	Migrant Students	Students with Disabilities
Our School	92.7%	85.4%	90.5%	72.2%	75.0%	N/A	60.0%	80.0%	N/A	88.9%	80.0%	N/A	58.5%
# of tests taken	273	294	507	18	20	N/A	5	15	N/A	567	5	N/A	41
State	64.2%	68.5%	78.7%	47.0%	51.5%	52.6%	77.3%	67.8%	52.1%	82.0%	33.9%	41.8%	34.4%

E.D. = Economically Disadvantaged

N.E.D. = Not Economically Disadvantaged

L.E.P. = Limited English Proficiency

N/A = Fewer than five students

Performance of Each Student Group on the ABCs End-of-Course Tests

Percentage of Passing Scores on the End-of-Course Tests Grouped by Gender, Ethnicity, and Other Factors

	Male	Female	White	Black	Hispanic	Amer. Indian	Asian Pacific Islander	Multi-Racial	E.D.	N.E.D.	L.E.P.	Migrant Students	Students with Disabilities
Our School	93.3%	82.2%	88.2%	77.8%	>95%	N/A	N/A	>95%	N/A	88.2%	N/A	N/A	78.3%
# of tests taken	299	258	518	18	5	N/A	N/A	10	N/A	557	N/A	N/A	23
State	80.1%	81.3%	88.5%	67.0%	74.1%	71.7%	88.0%	83.3%	70.9%	87.9%	55.8%	62.3%	54.9%

E.D. = Economically Disadvantaged

N.E.D. = Not Economically Disadvantaged

L.E.P. = Limited English Proficiency

N/A = Fewer than five students

HIGH STUDENT PERFORMANCE, CONTINUED

School Performance

Each year, schools in North Carolina may receive several designations based on their performance on the state's ABCs tests. These designations are awarded on the basis of the percentage of students performing at grade level and on whether students have learned as much as they are expected to learn in one year.

Our School's Designation(s): Honor School of Excellence, High Growth

DESIGNATION	PERFORMANCE: STUDENTS PERFORMING AT GRADE LEVEL	GROWTH: LEARNING ACHIEVED IN ONE YEAR			PERCENT OF SCHOOLS WITH DESIGNATION IN THE STATE
		High Growth	Expected Growth	Expected Growth Not Achieved	
HONOR SCHOOL OF EXCELLENCE	At least 90% of students at grade level and school made adequate yearly progress (AYP)	✓			35%
SCHOOL OF EXCELLENCE	At least 90% of students at grade level				0%
SCHOOL OF DISTINCTION	At least 80% of students at grade level				39%
SCHOOL OF PROGRESS	At least 60% of students at grade level				9%
NO RECOGNITION	60 to 100% of students at grade level				9%
PRIORITY SCHOOL	50 to 60% of students at grade level, OR Less than 50% of students at grade level				4%
LOW PERFORMING	Less than 50% of students at grade level				4%

In any group where the percentage of students at a grade level is greater than 95% or less than 5%, the actual values are not displayed because of federal privacy regulations. In these cases the results are shown as >95% or <5% for the group.

Adequate Yearly Progress (AYP) Results

North Carolina has set target goals that schools must meet to make Adequate Yearly Progress (AYP) under the federal No Child Left Behind (NCLB).

Our school made adequate yearly progress.

Our school met 21 out of 21 AYP targets.

QUALITY TEACHERS

	Total Number of Classroom Teachers*	Fully Licensed Teachers	Classes Taught by Highly Qualified Teachers
Our School	71	82%	71%
State	33	81%	84%

*The total number of teachers in this school and the average number of teachers in schools with similar grade ranges at the district and state level.

Keeping you informed

More information about your school is available on the NC School Report Cards website at:
<http://www.ncreportcards.org>



Public Schools of North Carolina
State Board of Education | Department of Public Instruction